

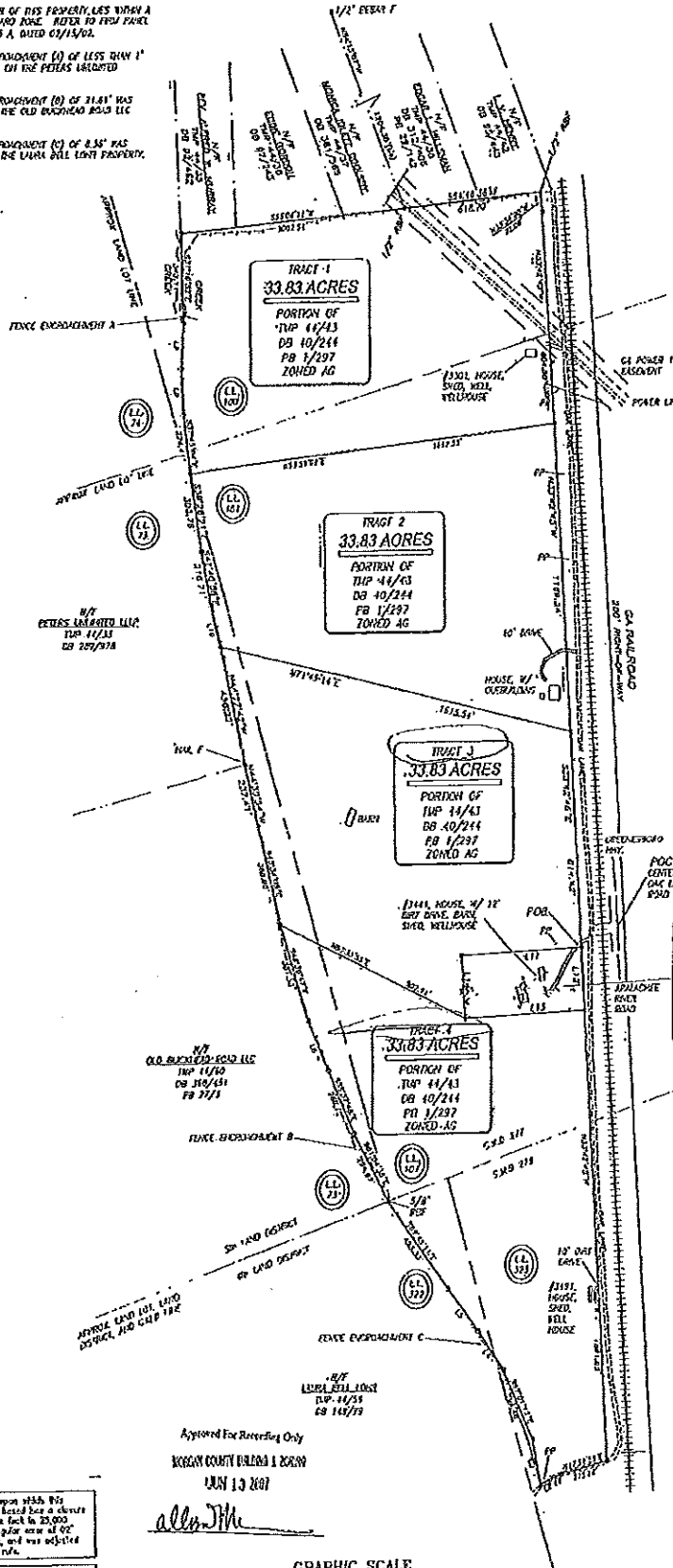
NO PORTION OF THIS PROPERTY LIES WITHIN A FLOOD HAZARD ZONE. REFER TO FEMA PANEL 133110025 A, DATED 02/15/00.

FENCE ENCROACHMENT (E) OF LESS THAN 1' WAS FOUND ON THE PERKS UNIMPROVED PROPERTY.

FENCE ENCROACHMENT (E) OF 3.14' WAS FOUND ON THE OLD BUCKHEAD ROAD LLC PROPERTY.

FENCE ENCROACHMENT (E) OF 8.36' WAS FOUND ON THE LARA HILL LANT PROPERTY.

**POB - POINT OF BEGINNING**  
 THE POINT OF BEGINNING BEING THE CENTERLINE INTERSECTION OF ONE LANE AND BUCKHEAD ROAD, BEING 535.87' IN LENGTH TO A 1/2" BEAR F SET ON THE ASSESSY MAPS OF 2007 (200 FEET) OF THE GEORGIA BUREAU OF LAND SURVEY, BEING THE POINT OF BEGINNING.



**LINE TABLE**

LINE NUMBER	BEARING
1	S21°15'30"W
2	S21°15'30"W
3	S21°15'30"W
4	S21°15'30"W
5	S21°15'30"W
6	S21°15'30"W
7	S21°15'30"W
8	S21°15'30"W
9	S21°15'30"W
10	S21°15'30"W
11	S21°15'30"W
12	S21°15'30"W
13	S21°15'30"W
14	S21°15'30"W
15	S21°15'30"W
16	S21°15'30"W
17	S21°15'30"W
18	S21°15'30"W
19	S21°15'30"W
20	S21°15'30"W
21	S21°15'30"W
22	S21°15'30"W
23	S21°15'30"W
24	S21°15'30"W
25	S21°15'30"W
26	S21°15'30"W
27	S21°15'30"W
28	S21°15'30"W
29	S21°15'30"W
30	S21°15'30"W
31	S21°15'30"W
32	S21°15'30"W
33	S21°15'30"W
34	S21°15'30"W
35	S21°15'30"W
36	S21°15'30"W
37	S21°15'30"W
38	S21°15'30"W
39	S21°15'30"W
40	S21°15'30"W
41	S21°15'30"W
42	S21°15'30"W
43	S21°15'30"W
44	S21°15'30"W
45	S21°15'30"W
46	S21°15'30"W
47	S21°15'30"W
48	S21°15'30"W
49	S21°15'30"W
50	S21°15'30"W
51	S21°15'30"W
52	S21°15'30"W
53	S21°15'30"W
54	S21°15'30"W
55	S21°15'30"W
56	S21°15'30"W
57	S21°15'30"W
58	S21°15'30"W
59	S21°15'30"W
60	S21°15'30"W
61	S21°15'30"W
62	S21°15'30"W
63	S21°15'30"W
64	S21°15'30"W
65	S21°15'30"W
66	S21°15'30"W
67	S21°15'30"W
68	S21°15'30"W
69	S21°15'30"W
70	S21°15'30"W
71	S21°15'30"W
72	S21°15'30"W
73	S21°15'30"W
74	S21°15'30"W
75	S21°15'30"W
76	S21°15'30"W
77	S21°15'30"W
78	S21°15'30"W
79	S21°15'30"W
80	S21°15'30"W
81	S21°15'30"W
82	S21°15'30"W
83	S21°15'30"W
84	S21°15'30"W
85	S21°15'30"W
86	S21°15'30"W
87	S21°15'30"W
88	S21°15'30"W
89	S21°15'30"W
90	S21°15'30"W
91	S21°15'30"W
92	S21°15'30"W
93	S21°15'30"W
94	S21°15'30"W
95	S21°15'30"W
96	S21°15'30"W
97	S21°15'30"W
98	S21°15'30"W
99	S21°15'30"W
100	S21°15'30"W

**TRACT 5**  
 3.00 ACRES  
 PORTION OF TWP 14/43 DB 40/244 PB 1/297 ZONED AG

\*THIS IS NOT A LEGAL LOT PURSUANT TO MORGAN COUNTY ZONING ORDINANCE, ADOPTED 2005, UPDATED 2005

PP - POWER POLE  
 \* - 1/2" BEAR F SET, UNLESS OTHERWISE NOTED  
 O - COMPUTED POINT  
 B - BARN FOUND



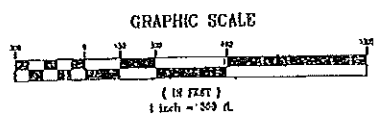
**BOUNDARY SURVEY FOR:**  
**VAUGHTER'S ESTATE**

3301 SUREHEAD ROAD  
 3311 SUREHEAD ROAD  
 3321 SUREHEAD ROAD  
 LAND LOT 312, 313  
 LAND LOT 73, 100, 101  
 277th, 278th C.M.D. MORGAN COUNTY, GEORGIA

4th LAND DISTRICT  
 5th LAND DISTRICT

SCALE: 1" = 300' DATE: JUNE 13, 2007

BALDWIN ENGINEERING SERVICES, INC.  
 ROBERT V. BALOWN, PLS 2655, PE 10842  
 150 WEST WASHINGTON STREET  
 MADISON, GA 30650 PH: (706) 342-0191



This map was made with the use of GPS in hand held a device precision of one foot to 25,000 feet and an equalizer over of 400 feet was used, and was adjusted with computer software.

This map or plot has been calculated for closure and is found to be accurate within one foot to 250,000 feet.

A TOPCON GTS 333 TOTAL STATION was used to obtain the bearing and angular measurements used in the preparation of this plot.

Approved For Recording Only  
 MORGAN COUNTY BALOWN & BROWN  
 JUN 13 2007

*Robert V. Balown*

FILE INFORMATION  
 DRAWING NUMBER