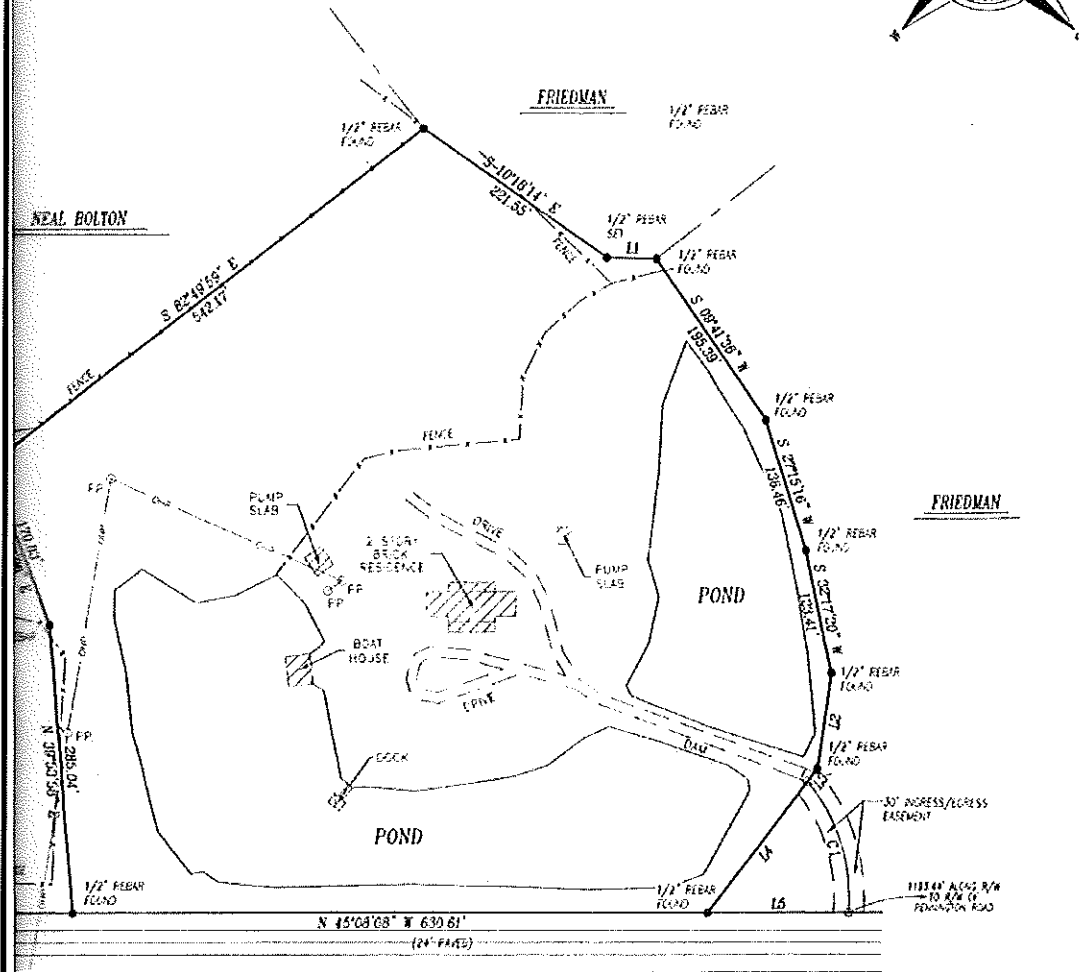
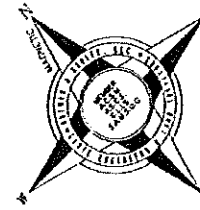


NUMBER	DIRECTION	DISTANCE
L1	S 43°27'22" E	49.57'
L2	S 52°46'29" W	95.16'
L3	S 82°47'19" W	15.31'
L4	S 82°47'19" W	165.01'
L5	S 45°06'36" E	142.93'

REF: PLAT BY BREWER & DUDLEY, I.L.C. FOR NEAL BOLTON DATED 7/24/2003.  
 REF: PLAT BY BREWER & DUDLEY, I.L.C. FOR ALAN FRIEDMAN & BARBARA FREEMAN DATED 6/4/2003.  
 NOTE: EXCEPT AS SPECIFICALLY SHOWN OR STATED ON THIS PLAT, THIS SURVEY DOES NOT PURPORT TO REFLECT ANY FACTS THAT AN ACCURATE AND CURRENT TITLE SEARCH MAY DISCLOSE.  
 NOTE: THIS PLAT SUBJECT TO ALL RIGHT-OF-WAYS, EASEMENTS AND BUFFERS SHOWN OR NOT SHOWN ON THIS SURVEY.



CONFEDERATE ROAD 60' R/W

NUMBER	CHORD DIRECTION	CHORD LENGTH	ARC LENGTH	RADIUS
E1	N 27°09'53" E	136.70	140.24	179.49

TOTAL AREA = 10.916 ACRES



Scale: 1" = 100'